

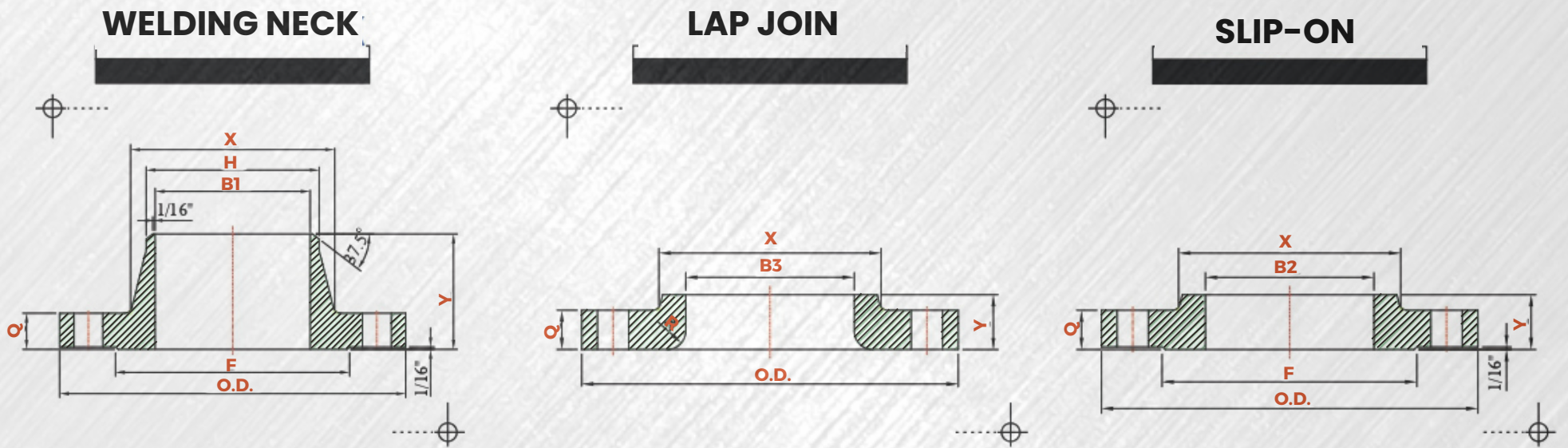


**Sourcing
Industrial
de México**

BRIDAS
CATÁLOGO
2023



CLASS 150 FLANGES ANSI B16.5



DIMENSIONS

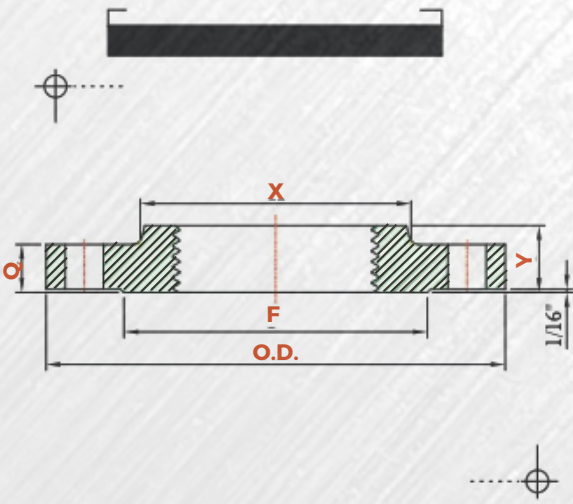
Unit : inch

NOM. PIPE SIZE	FLANGE DIAMETER (O.D.)	FLANGE THICKNESS (Q) MIN. (I)	HUB DIA. AT BASE (X)	RAISED FACE DIA. (F)	HUB DIA. AT WELDING POINT (H)	BORE DIAMETER (B)			COUNTER BORE OF THREADED FLANGE (C)	DEPTH OF SOCKET (D)	LENGTH THROUGH HUB (Y)		
						(B1) WELDING NECK AND SOCKET WELD (Z)	(B2) SLIP-ON AND SOCKET WELD MIN.	(B3) LAP JOINT MIN.			WELDING NECK	SLIP-ON SOCKET WELD AND THREADED	LAP JOINT
1/2	3.50	0.44	1.19	1.38	0.84	0.62	0.88	0.90	NO COUNTER BORE REQUIRE ON 150# THREADED FLANGES	0.38	1.88	0.62	0.62
3/4	3.88	0.50	1.50	1.69	1.05	0.82	1.09	1.11		0.44	2.06	0.62	0.62
1	4.25	0.56	1.94	2.00	1.32	1.05	1.36	1.38		0.50	2.19	0.69	0.69
1 1/4	4.62	0.62	2.31	2.50	1.66	1.38	1.70	1.72		0.56	2.25	0.81	0.81
1 1/2	5.00	0.69	2.56	2.88	1.90	1.61	1.95	1.97		0.62	2.44	0.88	0.88
2	6.00	0.75	3.06	3.62	2.38	2.07	2.44	2.46		0.69	2.50	1.00	1.00
2 1/2	7.00	0.88	3.56	4.12	2.88	2.47	2.94	2.97		0.75	2.75	1.12	1.12
3	7.50	0.94	4.25	5.00	3.50	3.07	3.57	3.60		0.81	2.75	1.19	1.19
3 1/2	8.50	0.94	4.8 1	5.50	4.00	3.55	4.07	4.10		0.88	2.81	1.25	1.25
4	9.00	0.94	5.31	6.19	4.50	4.03	4.57	4.60		0.94	3.00	1.31	1.31
5	10.00	0.94	6.44	7.31	5.56	5.05	5.66	5.69		0.94	3.50	1.44	1.44
6	11.00	1.00	7.56	8.50	6.63	6.07	6.72	6.75		1.06	3.50	1.56	1.56
8	13.50	1.12	9.6 9	10.62	8.63	7.98	8.72	8.75		1.25	4.00	1.75	1.75
10	16.00	1.19	12.00	12.75	10.75	10.02	10.88	10.92		1.31	4.00	1.94	1.94
12	19.00	1.25	14.38	15.00	12.75	12.00	12.88	12.92		1.56	4.50	2.19	2.19
14	21.00	1.38	15.75	16.25	14.00	13.25	14.14	14.18		1.63	5.00	2.25	3.12
16	23.50	1.14	18.00	18.50	16.00	15.25	16.16	16.19		1.75	5.00	2.50	3.44
18	25.00	1.56	19.88	21.00	18.00	17.25	18.18	18.20		1.94	5.50	2.69	3.81
20	27.50	1.6 9	22.00	23.00	20.00	19.25	20.20	20.2s		2.12	5.69	2.88	4.06
24	32.00	1.88	26.12	27.25	24.00	23.25	24.25	24.25		2.50	6.00	3.25	4.38

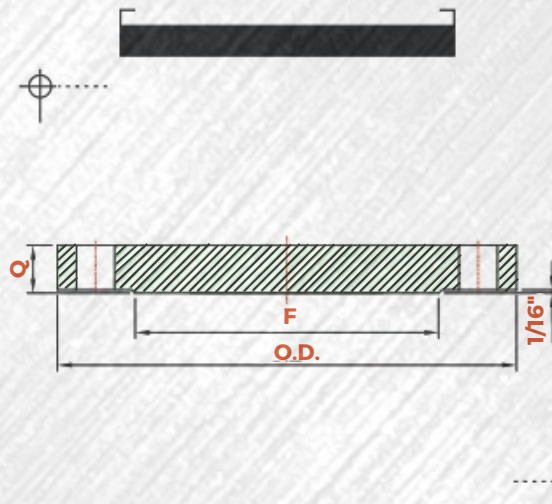


CLASS 150 FLANGES ANSI B16.5

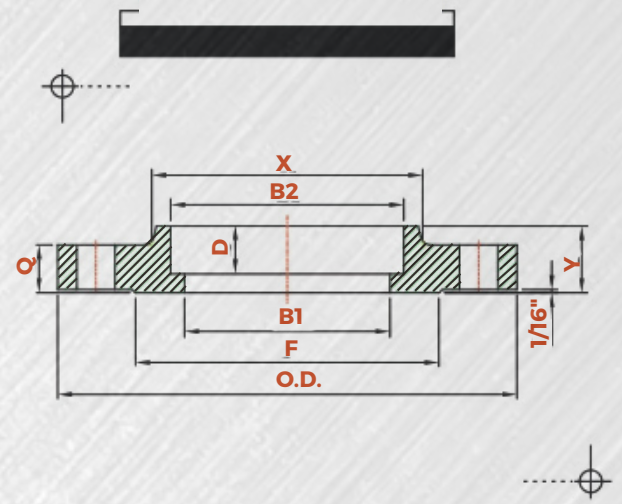
THREADED



BLIND



SOCKET WELD



DIMENSIONS

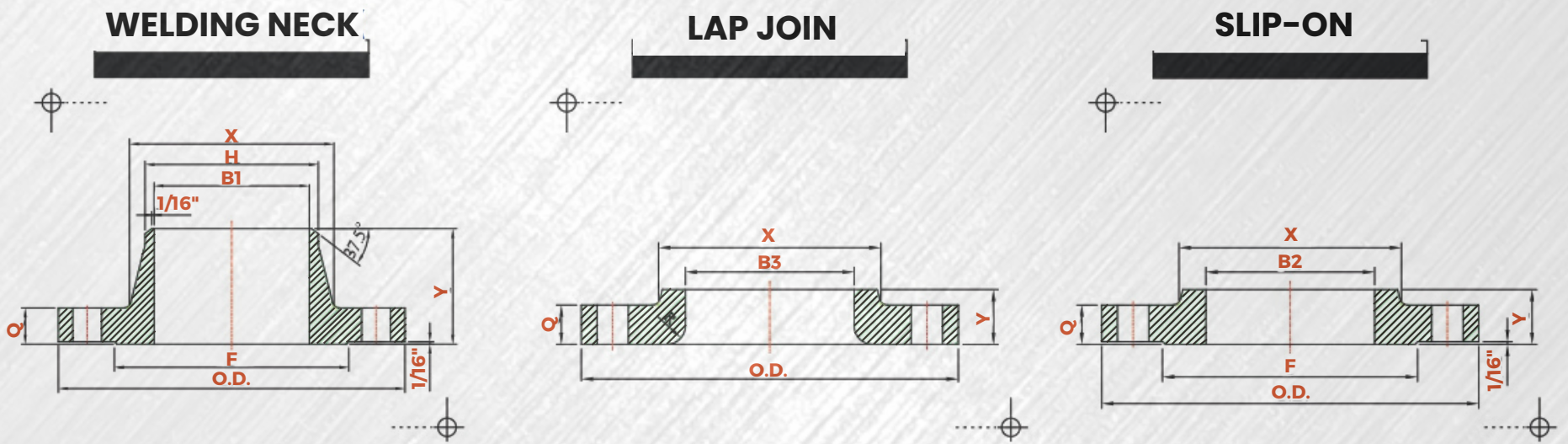
Unit : inch

NOM. PIPE SIZE	MIN. THREAD LENGTH	RADIUS (R) LAP JOINT	DRILLING			BOLTING			
			DIAMETER OF BOLT CIRCLE	NO. OF HOLES	DIA. OF HOLES	DIA. OF HOLES	MACHINE BOLT LENGTH	STUD BOLT LENGTH	
							RAISED FACE .06"	RAISED FACE .06"	RING JOINT
1/2	0.62	0.12	2.38	4	0.62	1/2	2.00	2.50	
3/4	0.62	0.12	2.75	4	0.62	1/2	2.25	2.50	
1	0.69	0.12	3.12	4	0.62	1/2	2.25	2.75	3.25
1 1/4	0.81	0.19	3.50	4	0.62	1/2	2.50	2.75	3.25
1 1/2	0.88	0.25	3.88	4	0.62	1/2	2.50	3.00	3.00
2	1.00	0.31	4.75	4	0.75	5/8	2.75	3.25	3.75
2 1/2	1.12	0.31	5.50	4	0.75	5/8	3.00	3.50	4.00
3	1.19	0.38	6.00	4	0.75	5/8	3.25	3.75	4.25
3 1/2	1.25	0.38	7.00	8	0.75	5/8	3.25	3.75	4.25
4	1.31	0.44	7.50	8	0.75	5/8	3.25	3.75	4.25
5	1.44	0.50	8.50	8	0.88	3/4	3.25	4.00	4.50
6	1.56	0.50	9.50	8	0.88	3/4	3.50	4.00	4.50
8	1.75	0.50	11.75	8	0.88	3/4	3.75	4.25	4.75
10	1.94	0.50	14.25	12	1.00	7/8	4.00	4.75	5.25
12	2.19	0.50	17.00	12	1.00	7/8	4.25	4.75	5.25
14	2.25	0.50	18.75	12	1.12	1	4.50	5.25	5.75
16	2.50	0.50	21.25	16	1.12	1	4.75	5.50	6.00
18	2.69	0.50	22.75	16	1.25	1 1/8	5.00	6.00	6.50
20	2.88	0.50	25.00	20	1.25	1 1/8	5.50	6.25	6.75
24	3.25	0.50	29.50	20	1.38	1 1/4	6.00	7.00	7.50

NOM. PIPE SIZE	APPROXIMATE WEIGHT EACH-POUNDS ±			
	WELDING NECK	SLIP-ON SOCKET WELD AND THREADED	LAP JOINT	BLIND
1/2	1.25	1.00	1.00	1.25
3/4	2.00	1.50	1.50	1.50
1	2.50	2.00	2.00	2.00
1 1/4	3.00	3.00	3.00	3.00
1 1/2	4.50	3.00	3.50	4.00
2	6.00	5.25	5.00	6.50
2 1/2	10.00	8.00	7.00	9.50
3	12.00	9.00	9.25	12.50
3 1/2	12.00	11.00	11.00	13.00
4	16.50	12.50	12.50	17.00
5	19.00	15.00	15.00	20.00
6	25.00	19.00	19.00	26.50
8	39.00	30.00	30.00	45.00
10	52.00	43.00	43.00	70.00
12	80.00	64.00	64.00	110.00
14	110.00	90.00	105.00	140.00
16	140.00	98.00	140.00	180.00
18	150.00	130.00	160.00	220.00
20	180.00	165.00	195.00	285.00
24	260.00	220.00	275.00	430.00



CLASS 300 FLANGES ANSI B16.5



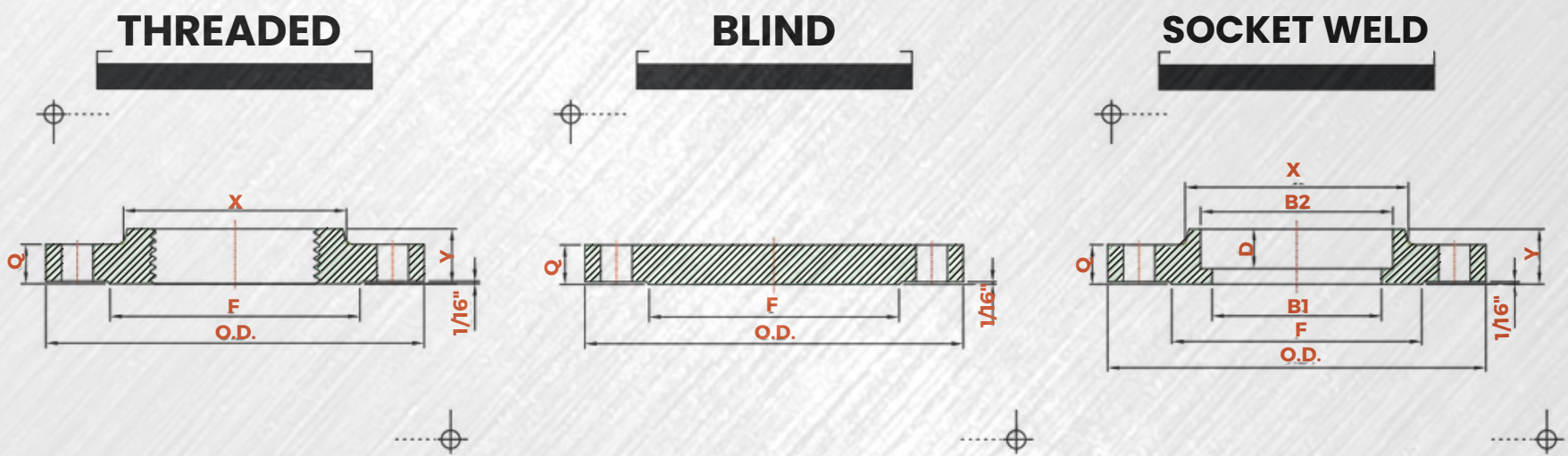
DIMENSIONS

Unit : inch

NOM. PIPE SIZE	FLANGE DIAMETER (O.D.)	FLANGE THICKNESS (Q) MIN. (I)	HUB DIA. AT BASE (X)	RAISED FACE DIA. (F)	HUB DIA. AT WELDING POINT (H)	BORE DIAMETER (B)			COUNTER BORE OF THREADED FLANGE (C) MIN.	DEPTH OF SOCKET (D)	LENGTH THROUGH HUB (Y)		
						(B1) WELDING NECK AND SOCKET WELD (2)	(B2) SLIP-ON AND SOCKET WELD MIN.	(B3) LAP JOINT MIN.			WELDING NECK	SLIP-ON SOCKET WELD AND THREADED	LAP JOINT
1/2	3.75	0.56	1.50	1.38	0.84	0.62	0.88	0.90	0.93	0.38	2.06	0.88	0.88
3/4	4.62	0.62	1.88	1.69	1.05	0.82	1.09	1.11	1.14	0.44	2.25	1.00	1.00
1	4.88	0.69	2.12	2.00	1.32	1.05	1.36	1.38	1.41	0.50	2.44	1.06	1.06
1 1/4	5.25	0.75	2.50	2.50	1.66	1.38	1.70	1.72	1.75	0.56	2.56	1.06	1.06
1 1/2	6.12	0.81	2.75	2.88	1.90	1.61	1.95	1.97	1.99	0.62	2.69	1.19	1.19
2	6.50	0.88	3.31	3.62	2.38	2.07	2.44	2.46	2.50	0.69	2.75	1.31	1.31
2 1/2	7.50	1.00	3.94	4.12	2.88	2.47	2.94	2.97	3.00	0.75	3.00	1.50	1.50
3	8.25	1.12	4.62	5.00	3.50	3.07	3.57	3.60	3.63	0.81	3.12	1.69	1.69
3 1/2	9.00	1.19	5.25	5.50	4.00	3.55	4.07	4.10	4.13	-	3.19	1.75	1.75
4	10.00	1.25	5.75	6.19	4.50	4.03	4.57	4.60	4.63	-	3.38	1.88	1.88
5	11.00	1.38	7.00	7.31	5.56	5.05	5.66	5.69	5.69	-	3.88	2.00	2.00
6	12.50	1.44	8.12	8.50	6.63	6.07	6.72	6.75	6.75	-	3.88	2.06	2.06
8	15.00	1.62	10.25	10.62	8.63	7.98	8.72	8.75	8.75	-	4.38	2.44	2.44
10	17.50	1.88	12.62	12.75	10.75	10.02	10.88	10.92	10.88	-	4.62	2.62	3.75
12	20.50	2.00	14.75	15.00	12.75	12.00	12.88	12.92	12.94	-	5.12	2.88	4.00
14	23.00	2.12	16.75	16.25	14.00	13.25	14.14	14.18	14.19	-	5.62	3.00	4.38
16	25.50	2.25	19.00	18.50	16.00	15.25	16.16	16.19	16.19	-	5.75	3.25	4.75
18	28.00	2.38	21.00	21.00	18.00	17.25	18.18	18.20	18.19	-	6.25	3.50	5.12
20	30.50	2.50	23.12	23.00	20.00	19.25	20.20	20.25	20.19	-	6.38	3.75	5.50
24	36.00	2.75	27.62	27.25	24.00	23.25	24.25	24.25	24.19	-	6.62	4.19	6.00



CLASS 300 FLANGES ANSI B16.5



DIMENSIONS

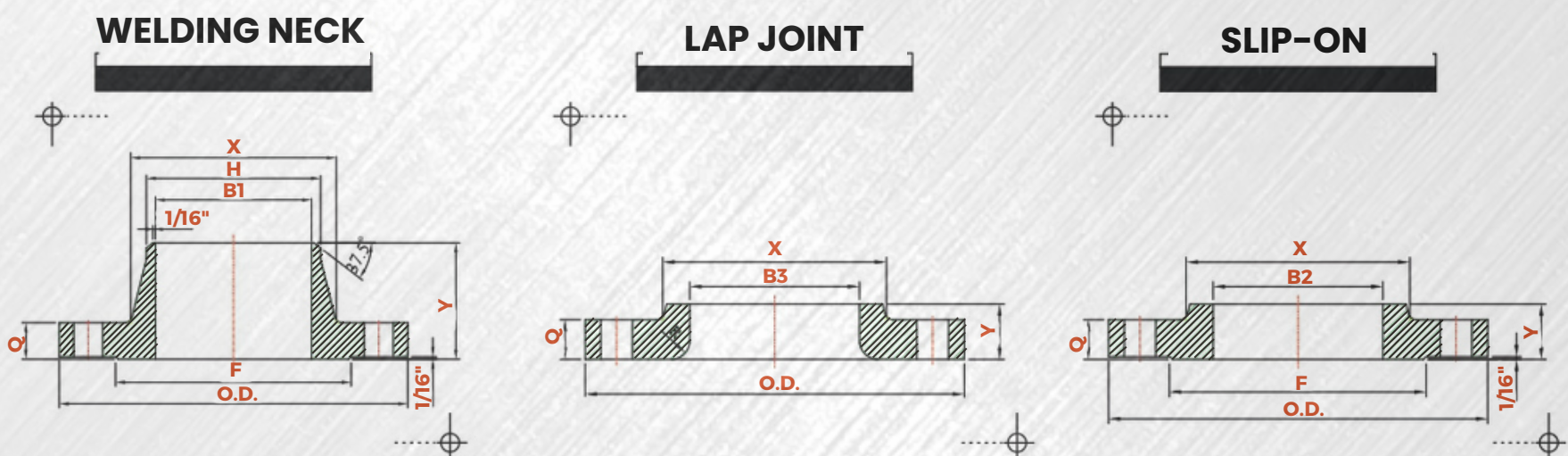
Unit : inch

NOM. PIPE SIZE	MIN. THREAD LENGTH	RADIUS (R) LAP JOINT	BORE DIAMETER (B)			BOLTING				
			DIAMETER OF BOLT CIRCLE	NO. OF HOLES	DIA. OF HOLES	DIA. OF BOLTS	MACHINE BOLT LENGTH		STUD BOLT LENGTH	
							RAISED FACE .06"	RAISED FACE .06"	RAISED FACE .06"	RING JOINT
1/2	0.62	0.12	2.62	4	0.62	1/2	2.25	2.75	3.00	
3/4	0.62	0.12	3.25	4	0.75	5/8	2.50	3.00	3.50	
1	0.69	0.12	3.50	4	0.75	5/8	2.75	3.25	3.75	
1 1/4	0.81	0.19	3.88	4	0.75	5/8	2.75	3.25	3.75	
1 1/2	0.88	0.25	4.50	4	0.88	3/4	3.00	3.75	4.25	
2	1.00	0.31	5.00	8	0.75	5/8	3.00	3.50	4.25	
2 1/2	1.12	0.31	5.88	8	0.88	3/4	3.50	4.00	4.75	
3	1.19	0.38	6.62	8	0.88	3/4	3.75	4.25	5.00	
3 1/2	1.25	0.38	7.25	8	0.88	3/4	3.75	4.50	5.25	
4	1.31	0.44	7.88	8	0.88	5/8	4.00	4.50	5.25	
5	1.44	0.50	9.25	8	0.88	3/4	4.25	4.75	5.50	
6	1.56	0.50	10.62	12	0.75	3/4	4.25	5.00	5.75	
8	1.75	0.50	13.00	12	0.88	7/8	4.75	5.50	6.25	
10	1.94	0.50	15.25	16	1.00	1	5.50	6.25	7.00	
12	2.19	0.50	17.25	16	1.00	1 1/8	6.00	6.75	7.50	
14	2.25	0.50	20.25	20	1.12	1 1/8	6.25	7.00	7.75	
16	2.50	0.50	22.50	20	1.12	1 1/4	6.50	7.50	8.25	
18	2.69	0.50	24.75	24	1.25	1 1/4	6.75	7.75	8.50	
20	2.88	0.50	27.00	24	1.25	1 1/4	7.25	8.25	9.00	
24	3.25	0.50	32.00	24	1.38	1 1/2	8.00	9.25	10.25	

NOM. PIPE SIZE	APPROXIMATE WEIGHT EACH-POUNDS ±			
	WELDING NECK	SLIP-ON SOCKET WELD AND THREADED	LAP JOINT	BLIND
1/2	2	2	2	2
3/4	3	3	3	3
1	4	3	3	3
1 1/4	5	4	4	4
1 1/2	7	6	6	6
2	9	7	7	8
2 1/2	12	10	10	12
3	15	13	13	16
3 1/2	18	17	17	21
4	25	22	22	27
5	32	28	28	35
6	42	39	39	50
8	67	58	58	81
10	91	81	91	125
12	140	115	140	185
14	180	165	190	250
16	250	190	250	295
18	320	250	295	395
20	400	315	370	505
24	580	475	550	790



CLASS 600 FLANGES ANSI B16.5



DIMENSIONS

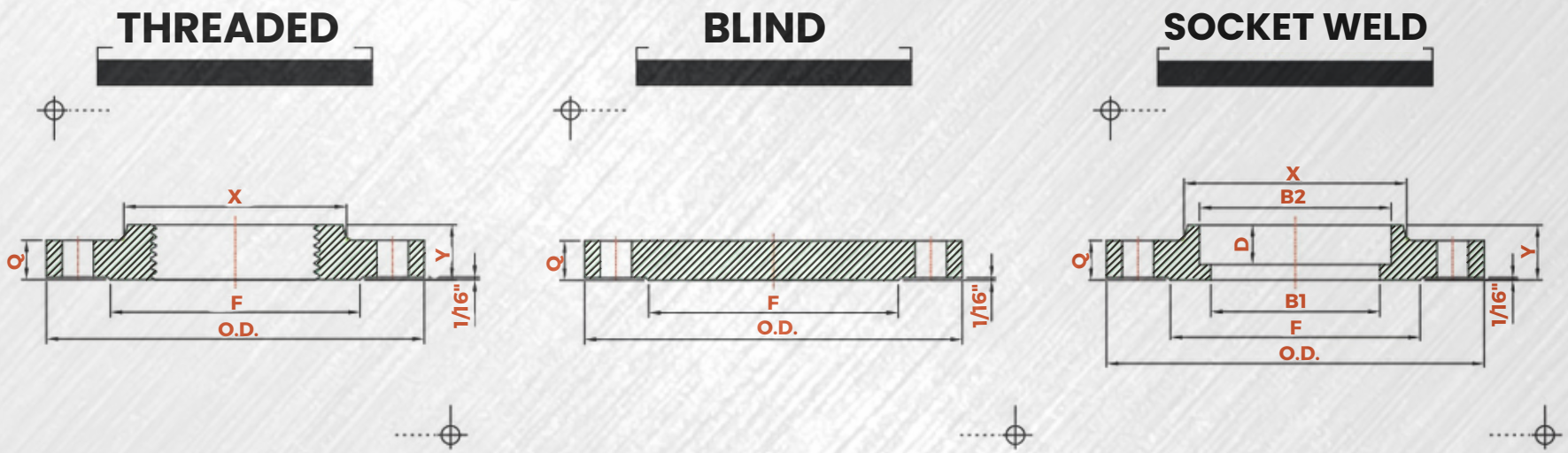
Unit : inch

NOM. PIPE SIZE	FLANGE DIAMETER (O.D.)	FLANGE THICKNESS (Q) MIN. (I)	HUB DIA. AT BASE (X)	RAISED FACE DIA. (F)	HUB DIA. AT WELDING POINT (H)	BORE DIAMETER (B)			COUNTER BORE OF THREADED FLANGE (C) MIN.	DEPTH OF SOCKET (D)	LENGTH THROUGH HUB (Y)		
						(B1) WELDING NECK AND SOCKET WELD (2)	(B2) SLIP-ON AND SOCKET WELD MIN.	(B3) LAP JOINT MIN.			WELDING NECK	SLIP-ON SOCKET WELD AND THREADED	LAP JOINT
1/2	3.75	0.56	1.50	1.38	0.84		0.88	0.90	0.93	0.38	2.06	0.88	0.88
3/4	4.62	0.62	1.88	1.69	1.05		1.09	1.11	1.14	0.44	2.25	1.00	1.00
1	4.88	0.69	2.12	2.00	1.32		1.36	1.38	1.41	0.50	2.44	1.06	1.06
1 1/4	5.25	0.81	2.50	2.50	1.66		1.70	1.72	1.75	0.56	2.62	1.12	1.12
1 1/2	6.12	0.88	2.75	2.88	1.90		1.95	1.97	1.99	0.62	2.75	1.25	1.25
2	6.50	1.00	3.31	3.62	2.38		2.44	2.46	2.50	0.69	2.88	1.44	1.44
2 1/2	7.50	1.12	3.94	4.12	2.88		2.94	2.97	3.00	0.75	3.12	1.62	1.62
3	8.25	1.25	4.62	5.00	3.50		3.57	3.6	3.63	0.81	3.25	1.81	1.81
3 1/2	9.00	1.38	5.25	5.50	4.00		4.07	4.10	4.13	-	3.38	1.94	1.94
4	10.75	1.50	6.00	6.19	4.50		4.57	4.60	4.63	-	4.00	2.12	2.12
5	13.00	1.75	7.44	7.31	5.56		5.66	5.69	5.69	-	4.50	2.38	2.38
"	14.00	1.88	8.75	8.50	6.63		6.72	6.75	6.75	-	4.62	2.62	2.62
8	16.50	2.19	10.75	10.62	8.63		8.72	8.75	8.75	-	5.25	3.00	3.00
10	20.00	2.50	13.50	12.75	10.75		10.88	10.92	10.88	-	6.00	3.38	4.38
12	22.00	2.62	15.75	15.00	12.75		12.88	12.92	12.94	-	6.12	3.62	4.62
14	23.75	2.75	17.00	16.25	14.00		14.14	14.18	14.19	-	6.50	3.69	5.00
16	27.00	3.00	19.50	18.50	16.00		16.16	16.19	16.19	-	7.00	4.19	5.50
18	29.25	3.25	21.50	21.00	18.00		18.18	18.20	18.19	-	7.25	4.62	6.00
20	32.00	3.50	24.00	23.00	20.00		20.20	20.25	20.19	-	7.50	5.00	6.50
24	37.00	4.00	28.25	27.25	24.00		24.25	24.25	24.19	-	8.00	5.50	7.25

TO BE SPECIFIED BY PURCHASER



CLASS 600 FLANGES ANSI B16.5



DIMENSIONS

Unit : inch

NOM. PIPE SIZE	MIN. THREAD LENGTH	RADIUS (R) LAP JOINT	DRILLING			BOLTING			
			DIAMETER OF BOLT CIRCLE	NO. OF HOLES	DIA OF HOLES	DIA OF BOLTS	MACHINE BOLT LENGTH RAISED FACE .06"	STUD BOLT LENGTH	
								RAISED FACE .06"	RING JOINT
1/2	0.62	0.12	2.62	4	0.62	1/2	3.25	3.00	3.00
3/4	0.62	0.12	3.25	4	0.75	5/8	3.50	3.25	3.50
1	0.69	0.12	3.50	4	0.75	5/8	3.75	3.50	3.75
1 1/4	0.81	0.19	3.88	4	0.75	5/8	4.00	3.75	4.00
1 1/2	0.88	0.25	4.50	4	0.88	3/4	4.25	4.00	4.25
2	1.12	0.31	5.00	8	0.75	5/8	4.25	4.00	4.50
2 1/2	1.25	0.31	5.88	8	0.88	3/4	4.75	4.5	5.00
3	1.38	0.38	6.62	8	0.88	3/4	5.00	4.75	5.25
3 1/2	1.56	0.38	7.25	8	1.00	7/8	5.50	5.25	5.75
4	1.62	0.44	8.50	8	1.00	7/8	5.75	5.50	6.00
5	1.88	0.44	10.50	8	1.12	1	6.50	6.25	6.75
6	2.00	0.50	11.50	12	1.12	1	6.75	6.50	7.00
8	2.25	0.50	13.75	12	1.25	1 1/8	7.75	7.50	7.75
10	2.56	0.50	17.00	16	1.38	1 1/4	8.50	8.25	8.75
12	2.75	0.50	19.25	20	1.38	1 1/4	8.75	8.50	9.00
14	2.88	0.50	20.75	20	1.50	1 3/8	9.25	9.00	9.5
16	3.06	0.50	23.75	20	1.62	1 1/2	10.00	9.75	10.25
18	3.12	0.5	25.75	20	1.75	1 5/8	10.75	10.50	11.00
20	3.25	0.50	28.50	24	1.75	1 5/8	11.50	11.25	11.75
24	3.62	0.50	33.00	24	2.00	1 7/8	13.00	12.75	13.25

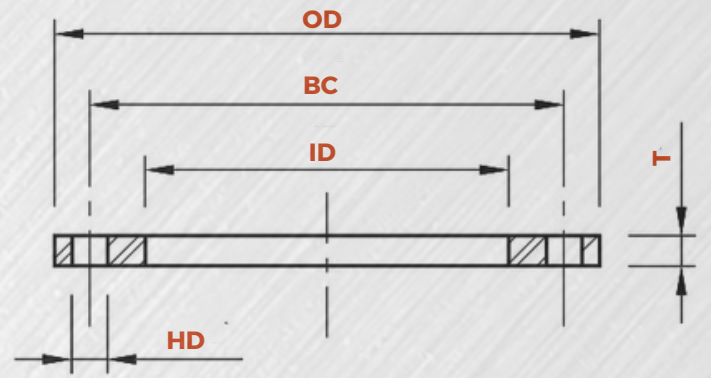
NOM. PIPE SIZE	LENGTH THROUGH HUB (Y)			
	WELDING NECK	SLIP-ON SOCKET WELD AND THREADED	LAP JOINT	BLIND
1/2	2	2	2	2
3/4	4	3	3	3
1	4	4	4	4
1 1/4	6	5	5	5
1 1/2	8	7	7	8
2	12	9	9	10
2 1/2	18	13	12	15
3	23	16	15	20
3 1/2	26	21	20	20
4	42	37	36	41
5	68	63	61	68
6	81	80	78	86
8	120	115	110	140
10	190	170	170	230
12	225	200	200	295
14	280	230	250	355
16	390	330	365	495
18	475	400	435	630
20	590	510	570	810
24	830	730	810	1250



PLATE FLANGES

304L & 316L STAINLESS STEEL

- ➔ Dimensions are given in inches.
- ➔ All plate flanges are flat face.
- ➔ Lap Joint application (as back-op) for use with flat or angle type face rings can be furnished upon request.
- ➔ Drilling is 150# class.



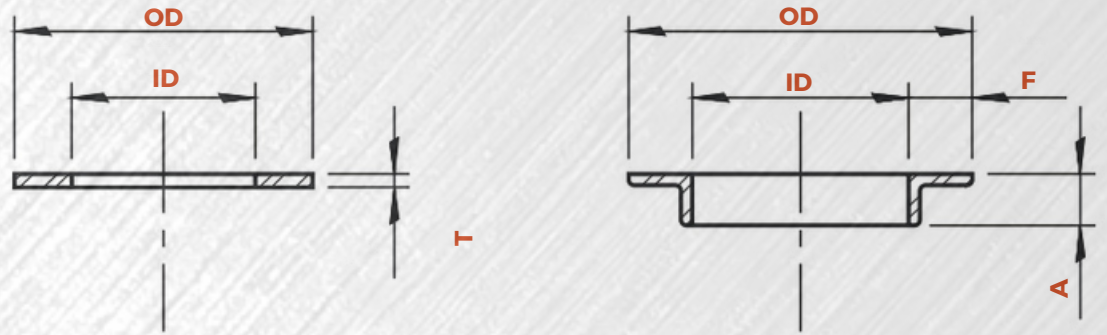
NOMINAL PIPE SIZE	LBS	ID	OD	T (PLATE FLG)	T (SS BU FLG)	BC	HD	BOLT SIZE	NUMBER OF BOLT HOLES
1/2	1.10	.880	3 1/2	1/2	1/2	2 3/8	5/8	1/2	4
3/4	1.40	1.090	3 7/8	1/2	1/2	2 3/4	5/8	1/2	4
1	2.00	1.360	4 1/4	1/2	1/2	3 1/8	5/8	1/2	4
1 1/4	2.30	1.700	4 5/8	1/2	1/2	3 1/2	5/8	1/2	4
1 1/2	2.30	1.950	5	1/2	1/2	3 7/8	5/8	1/2	4
2	3.30	2.440	6	1/2	1/2	4 3/4	3/4	5/8	4
2 1/2	4.60	2.940	7	1/2	1/2	5 1/2	3/4	5/8	4
3	4.90	3.570	7 1/2	1/2	1/2	6	3/4	5/8	8
4	6.70	4.570	9	1/2	1/2	7 1/2	3/4	5/8	8
5	7.40	5.660	10	1/2	1/2	8 1/2	7/8	3/4	8
6	8.40	6.720	11	1/2	1/2	9 1/2	7/8	3/4	8
8	12.00	8.720	13 1/2	1/2	1/2	11 3/4	7/8	3/4	12
10	18.80	10.880	16	5/8	5/8	14 1/4	1	7/8	12
12	27.30	12.880	19	5/8	5/8	17	1	7/8	12
14	33.60	14.140	21	5/8	5/8	18 3/4	1 1/8	1	16
16	48.40	16.160	23 1/2	3/4	5/8	21 1/4	1 1/8	1	16
18	68.00	18.180	25	3/4	3/4	22 3/4	1 1/4	1 1/8	9.75
20	75.60	20.200	27 1/2	1	3/4	25	1 1/4	1 1/8	20
24	95.50	24.250	32	1	1	29 1/2	1 3/8	1 1/4	20
30	126.00	30.250	38 3/4	1	1	36	1 3/8	1 1/4	28
36	211.00	36.250	46	1 1/4	1 1/4	42 3/4	1 5/8	1 1/2	32



DUCTIL IRON BACK-UP FLANGES

316L STAINLESS STEEL

➔ Dimensions are given in inches.



NOMINAL PIPE SIZE	ID	FLAT FACE RINGS				ANGLE FACE RINGS				
		T 10GA (.140)		T 1/4" (.250)		T	F	A	OD	LBS
		OD	LBS	OD	LBS					
1/2	.875	1.688	.05	-	-	1/8	3/8	1/2	1.625	.10
3/4	1.070	2.000	.07	-	-	1/8	1/2	1/2	2.000	.13
1	1.335	2.500	.09	-	-	1/8	9/16	1/2	2.500	.20
1 1/4	1.688	2.500	.11	-	-	1/8	1/2	1/2	2.750	.22
1 1/2	1.920	3.000	.17	-	-	1/8	5/8	7/16	3.180	.26
2	2.400	4.000	.32	-	-	1/8	11/16	7/16	3.810	.36
2 1/2	2.895	4.500	.35	-	-	1/8	3/4	1/2	4.500	.51
3	3.550	5.000	.38	-	-	1/8	3/4	3/4	5.000	.70
4	4.550	6.250	.59	-	-	1/8	7/8	3/4	6.250	.90
5	5.610	7.500	.81	-	-	9/64	1	1	7.680	1.30
6	6.650	8.620	.95	-	-	9/64	1	1	8.650	1.50
8	8.690	10.750	1.20	-	-	3/16	1	1	10.650	2.90
10	10.840	12.750	1.50	-	-	3/16	1 1/4	1 1/4	13.270	4.60
12	12.840	14.750	2.60	-	-	1/4	1 1/2	1 1/2	15.780	8.40
14	14.090	-	-	17.060	5.30	1/4	1 1/2	1 1/2	17.060	9.40
16	16.090	-	-	19.060	6.00	1/4	1 1/2	1 1/2	19.060	10.80
18	18.125	-	-	21.060	6.70	1/4	1 1/2	1 1/2	21.060	11.50
20	20.125	-	-	23.090	7.40	1/4	1 1/2	1 1/2	23.090	13.00
24	24.125	-	-	27.090	8.80	1/4	2	2	28.090	21.10
30	30.160	-	-	34.090	14.70	1/4	2	2	34.090	25.90
36	36.160	-	-	40.090	17.40	1/4	2	2	40.090	30.90

